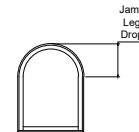
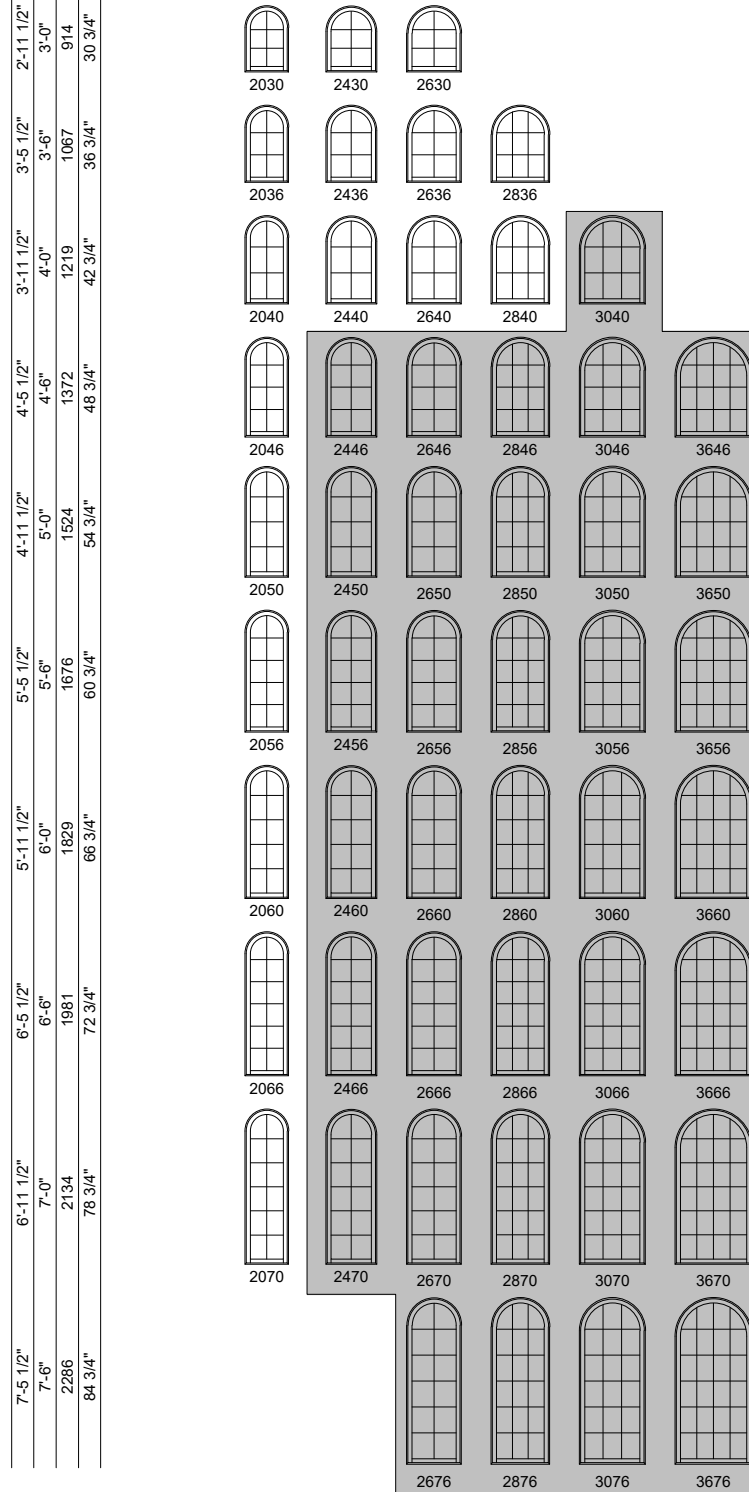


### Circle Top Casement Windows (8211)

Jamb Dimension	1'-11 1/2"	2'-3 1/2"	2'-5 1/2"	2'-7 1/2"	2'-11 1/2"	3'-5 1/2"
Rough Opening	2'-0"	2'-4"	2'-6"	2'-8"	3'-0"	3'-6"
Metric R.O. (mm)	610	711	762	813	914	1067
Glass Size	18 3/4"	22 3/4"	24 3/4"	26 3/4"	30 3/4"	36 3/4"
Jamb Radius	11 3/4"	13 3/4"	14 3/4"	15 3/4"	17 3/4"	20 3/4"
Jamb Leg Drop	11 3/4"	13 3/4"	14 3/4"	15 3/4"	17 3/4"	20 3/4"



For jamb leg heights  
subtract leg drop from height

■ Shaded units meet or exceed egress opening requirements per 2015 IBC (International Building Code) minimum dimensions of 20" [508mm] clear opening width, 24" [610mm] clear opening height, 5.7 sq. ft. [5295cm<sup>2</sup>] clear opening and floor to bottom of clear opening not to exceed 44" [1118mm] in height.

Verify local or state egress opening sizes with your local building inspector.

Floor to bottom of clear opening dimensions are based on 82" [2083mm] jamb height of Weather Shield French doors and center hinged French doors.

See Opening Specification chart for reference.